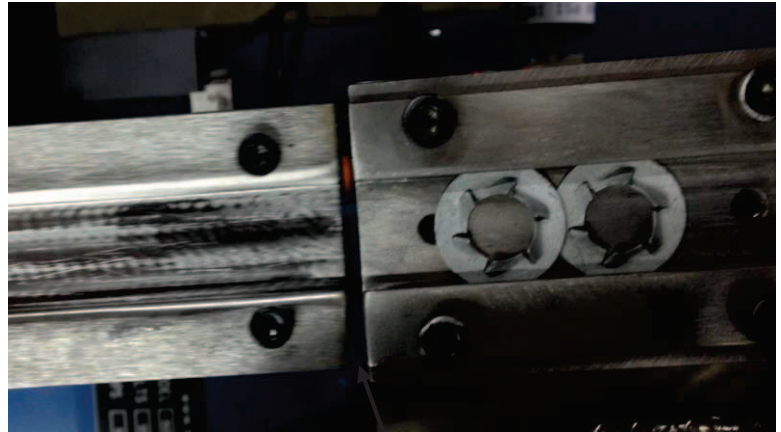


EXCESSIVE NOISE

OBSTRUCTIVE INTERFERENCE

Be sure that the vibrating feeder bowl is **not** in contact with any external objects. A feeder bowl that is vibrating against a gravity or inline track will cause excessive noise and possible damage from the repetitive contact interference. The area around the feeder bowl should have adequate space around it, insuring that there will be no interference.



NEEDS CLEARANCE

AREA AROUND THE FEEDER BOWL

